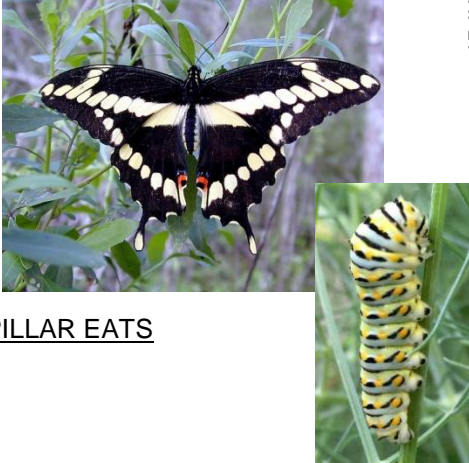


**Houston Native Pollinators**

**GIANT SWALLOWTAIL**

BUTTERFLY



CATERPILLAR EATS

Dill  
Parsley  
Fennel  
Carrot

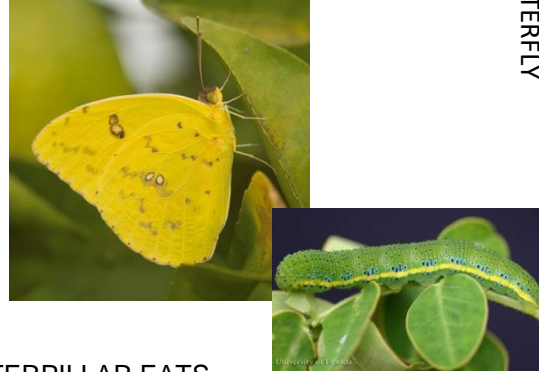
ADULT BUTTERFLY EATS

Nectar from flowers

**Houston Native Pollinators**

**CLOUDLESS SULPHUR**

BUTTERFLY



CATERPILLAR EATS

Senna  
Partridge Pea  
Cassia

ADULT BUTTERFLY EATS

Nectar from flowers

**Houston Native Pollinators**

**GULF FRITILLARY**

BUTTERFLY



CATERPILLAR EATS

Passion Flower

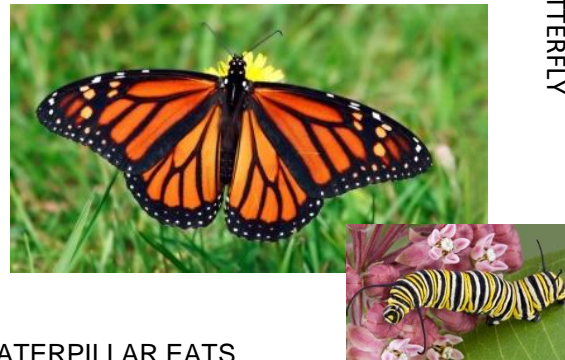
ADULT BUTTERFLY EATS

Nectar from flowers

**Houston Native Pollinators**

**MONARCH**

BUTTERFLY



CATERPILLAR EATS

Milkweed

ADULT BUTTERFLY EATS

Nectar from flowers

**Houston Native Pollinators**

**SKIPPER**

BUTTERFLY



CATERPILLAR EATS  
Legumes (*Senna, Clover, Pea*)

ADULT BUTTERFLY EATS  
Nectar from flowers

**Houston Native Pollinators**

**HAIRSTREAK**

BUTTERFLY



CATERPILLAR EATS  
Oak Trees

ADULT BUTTERFLY EATS  
Nectar from flowers

**Houston Native Pollinators**

**AMERICAN BUMBLE BEE**

BEE (Walnut-sized)



EATS  
Nectar from flowers

NESTS  
In ground

**Houston Native Pollinators**

**SOUTHERN CARPENTER**

BEE (Walnut-sized)



FEMALE

MALE

EATS  
Nectar from flowers

NESTS  
In wood cavities



**Houston Native Pollinators**

**LEAFCUTTER**



BEE (Jelly Bean-sized)

EATS  
Nectar from flowers

NESTS  
In cavities lined with leaves, "bee hotels"

**Houston Native Pollinators**

**METALLIC GREEN SWEAT BEE**



BEE (Pea-sized)

EATS  
Nectar from flowers

NESTS  
In ground

**Houston Native Pollinators**

**LONG HORNED BEE**



BEE (Pea-sized)

EATS  
Nectar from flowers

NESTS  
In ground

**Houston Native Pollinators**

**SWEAT BEE**



BEE (Grain of Rice-sized)

EATS  
Nectar from flowers

NESTS  
In ground

**Houston Native Pollinators**

**MEXICAN LONG-TONGUED BAT**



BAT

EATS

Nectar from cactus and agave flowers  
Fruit

NESTS

In caves or bat houses

**Houston Native Pollinators**

**GREATER LONG-NOSED BAT**



BAT

EATS

Nectar from cactus and agave flowers

NESTS

In caves or bat houses

**Houston Native Pollinators**

**GROUND BEETLE**



BEETLE

EATS

Nectar from flowers  
Plant matter

NESTS

In ground or wood

**Houston Native Pollinators**

**SCARAB BEETLE**



BEETLE

EATS

Nectar from flowers  
Plant matter

NESTS

In ground or wood

**Houston Native Pollinators**

**LADY BEETLE**



BETTLE

EATS

Nectar from flowers  
Plant matter

NESTS

In ground or wood

**Houston Native Pollinators**

**CUCUMBER BEETLE**



BETTLE

EATS

Nectar from flowers  
Plant matter

NESTS

In ground or wood

**Houston Native Pollinators**

**SPHINX MOTH**



MOTH

CATERPILLAR EATS

Grape Leaves

ADULT BUTTERFLY EATS

Nectar from flowers

**Houston Native Pollinators**

**POLYPHEMUS MOTH**



MOTH

CATERPILLAR EATS

Variety of Leaves

ADULT BUTTERFLY EATS

Nectar from flowers

**Houston Native Pollinators**

**REGAL MOTH**



MOTH

CATERPILLAR EATS

Walnut, Hickory, Ash, and Sumac Tree Leaves

ADULT BUTTERFLY EATS

Nectar from flowers

**Houston Native Pollinators**

**BEET WEBWORM MOTH**



MOTH

CATERPILLAR EATS

Beets  
Chard  
Potatoes  
Amaranth

ADULT BUTTERFLY EATS

Nectar from flowers

**Houston Native Pollinators**

**RED AND BLACK MASON WASP**



WASP

LARVAE EAT

Insects

ADULT EATS

Nectar from flowers

**Houston Native Pollinators**

**POTTER WASP**



WASP

LARVAE EAT

Insects

ADULT EATS

Nectar from flowers

**Houston Native Pollinators**

**HOVER FLY**



FLY

EATS  
Nectar from flowers

**Houston Native Pollinators**

**LOVEBUGS**



FLY

EATS  
Nectar from flowers

**Houston Native Pollinators**

**BLOWFLY**



FLY

EATS  
Nectar from flowers  
Dead plant and animal matter

**Houston Native Pollinators**

**RUBY-THROATED HUMMINGBIRD**



HUMMINGBIRD

EATS  
Nectar from flowers  
Insects

**Houston Native Pollinators**

**BLACK-CHINNED HUMMINGBIRD**



HUMMINGBIRD

EATS

Nectar from flowers  
Insects

**Houston Native Pollinators**

**CARPENTER ANTS**



ANTS

EATS

Nectar from flowers  
Dead plant and animal matter